



# OFFICE/LOFT SPACE FOR LEASE

## 11-13 W MAIN ST, CARPENTERSVILLE, IL

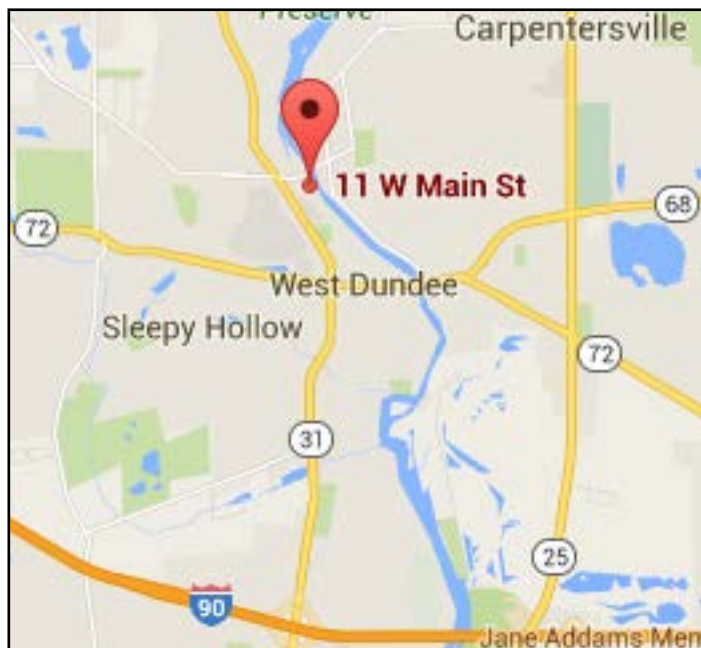


### BUILDING FEATURES:

- 2,400-3,200 SF of Beautiful Creative Loft/Office Space
- Wood Floors, Vaulted Ceilings and Exposed Brick!
- Office Campus Setting Along the Fox River
- Meticulously Manicured Landscaping
- Easy Access to I-90
- Elevator in Building
- Tenants Billed only on Usable Square Feet
- AMPLE Parking Available
- Building Renovated in 2015
- A+ Ownership; Will Build to Suit Tenant's Needs
- **Rental Rate: \$16/MG**

### AVAILABLE SPACE:

BLDNG	SUITE	SQ FT	FEATURES
11	201	2,400	Creative/Loft Space, Open Floor Plan
11	301	2,400	Wooden Floors, Vaulted Ceilings
13	101	3,200	High Ceilings, Warm Shell, Exposed Wooden Beams and Brick



### FOR MORE INFORMATION:

ANDREW BLOCK  
 Direct: 847.246.9636  
 andrew@chicagolandcommercial.com



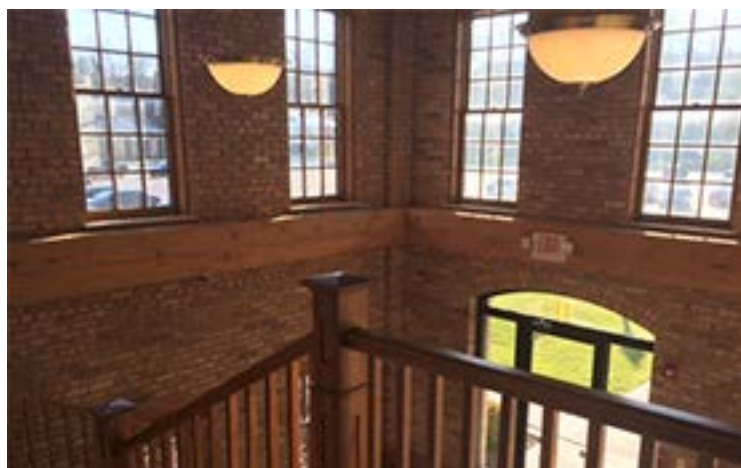
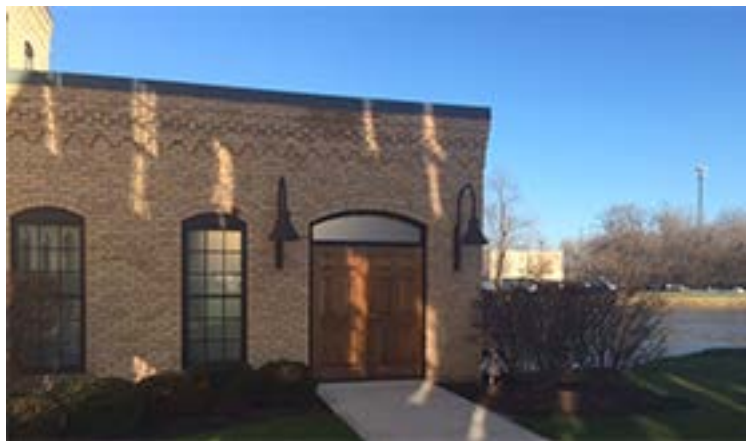
1240 W. Northwest Hwy., Palatine, IL 60067  
[www.chicagolandcommercial.com](http://www.chicagolandcommercial.com)



# OFFICE/LOFT SPACE FOR LEASE

11-13 W MAIN ST, CARPENTERSVILLE, IL

## PHOTOS:



## FOR MORE INFORMATION:

ANDREW BLOCK  
Direct: 847.246.9636  
[andrew@chicagolandcommercial.com](mailto:andrew@chicagolandcommercial.com)

LEASING | SALES | TENANT ADVISORY | MANAGEMENT



**Chicagoland  
Commercial**  
REAL ESTATE

1240 W. Northwest Hwy., Palatine, IL 60067  
[www.chicagolandcommercial.com](http://www.chicagolandcommercial.com)

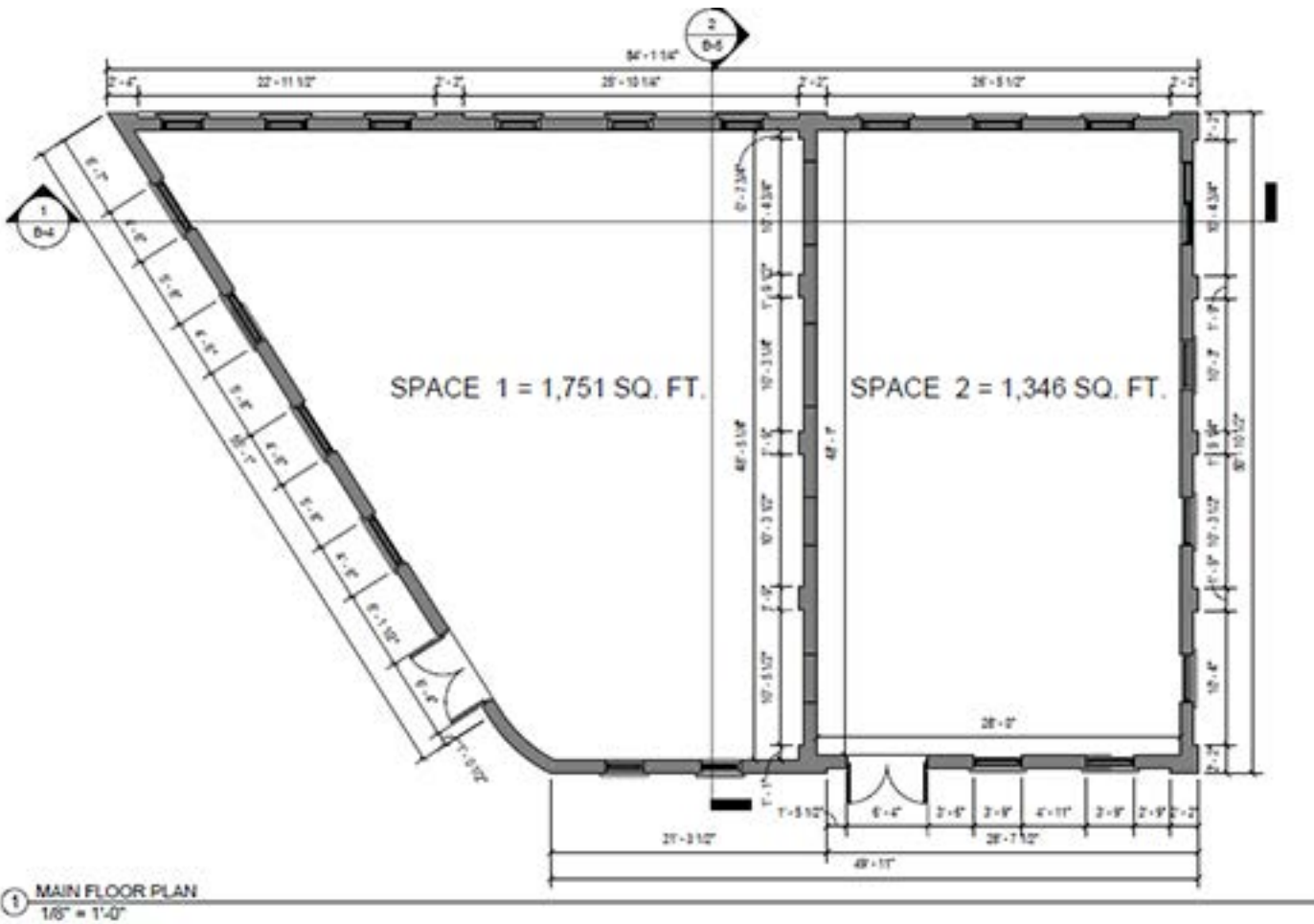
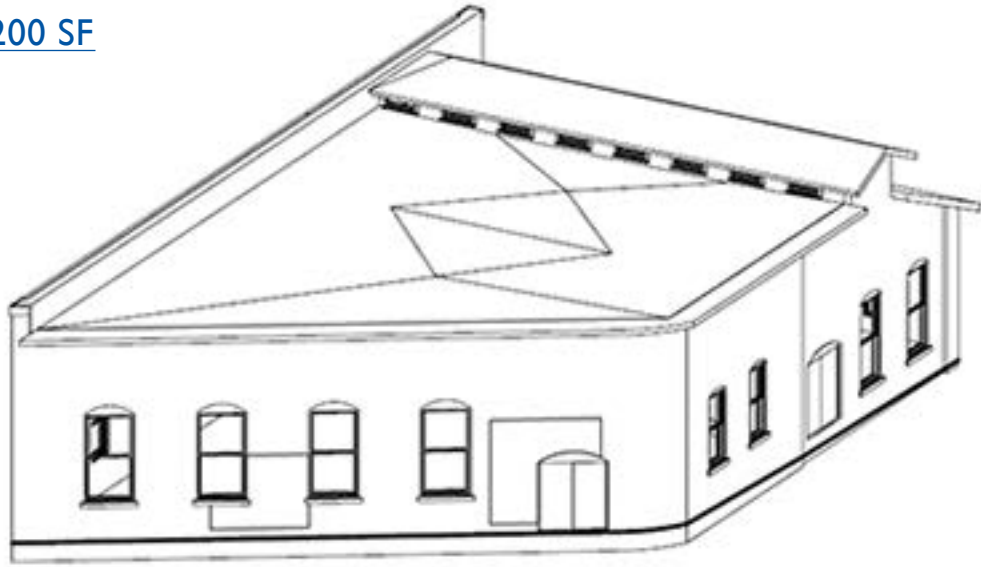


# OFFICE/LOFT SPACE FOR LEASE

## 11-13 W MAIN ST, CARPENTERSVILLE, IL

### FLOOR PLANS:

13 W MAIN ST: 3,200 SF



### FOR MORE INFORMATION:

ANDREW BLOCK  
Direct: 847.246.9636  
andrew@chicagolandcommercial.com



1240 W. Northwest Hwy., Palatine, IL 60067  
[www.chicagolandcommercial.com](http://www.chicagolandcommercial.com)