



INDUSTRIAL SPACE FOR LEASE

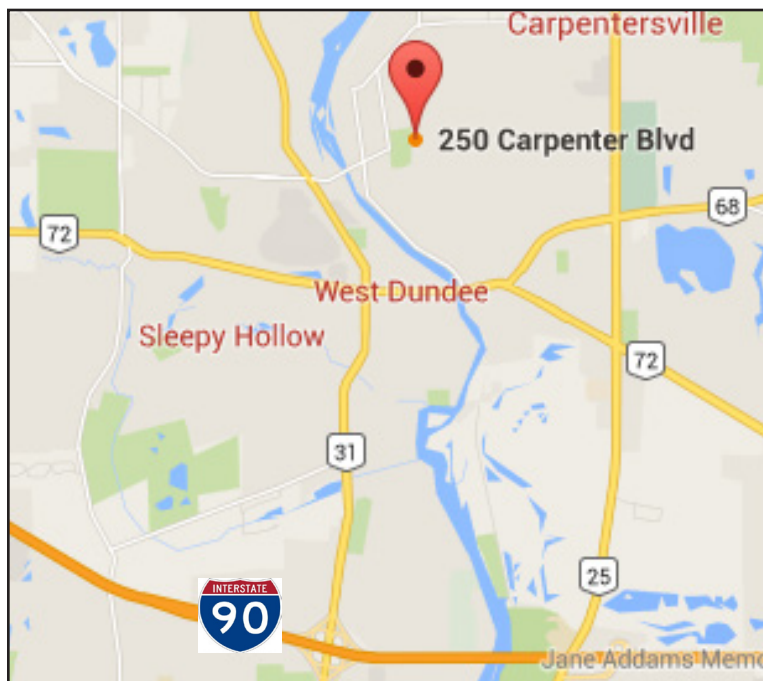
250 CARPENTER BLVD, CARPENTERSVILLE, IL



BUILDING FEATURES:

- 13,000 SF of Space Available; 3,000 SF of Office
- 3 Enclosed Truck Docks (2 Levelers)
- 1 Drive-in-Door
- Power: 800 AMPs/480v
- Located Just North of Downtown East Dundee
- 13' Clear Ceiling Height
- AMPLE Parking Available; 40 Surface Spaces
- Built in 1965
- A+ Ownership; Will Build to Suit Tenant's Needs

■ **Rental Rate: \$8/MG**



AVAILABLE SPACE:

TOTAL (SF)	OFFICE (SF)	WAREHOUSE (SF)
13,000	3,000	10,000

FOR MORE INFORMATION:

CHRISTINA ADAMS
 Direct: 847.246.9634
christina@chicagolandcommercial.com



1240 W. Northwest Hwy., Palatine, IL 60067

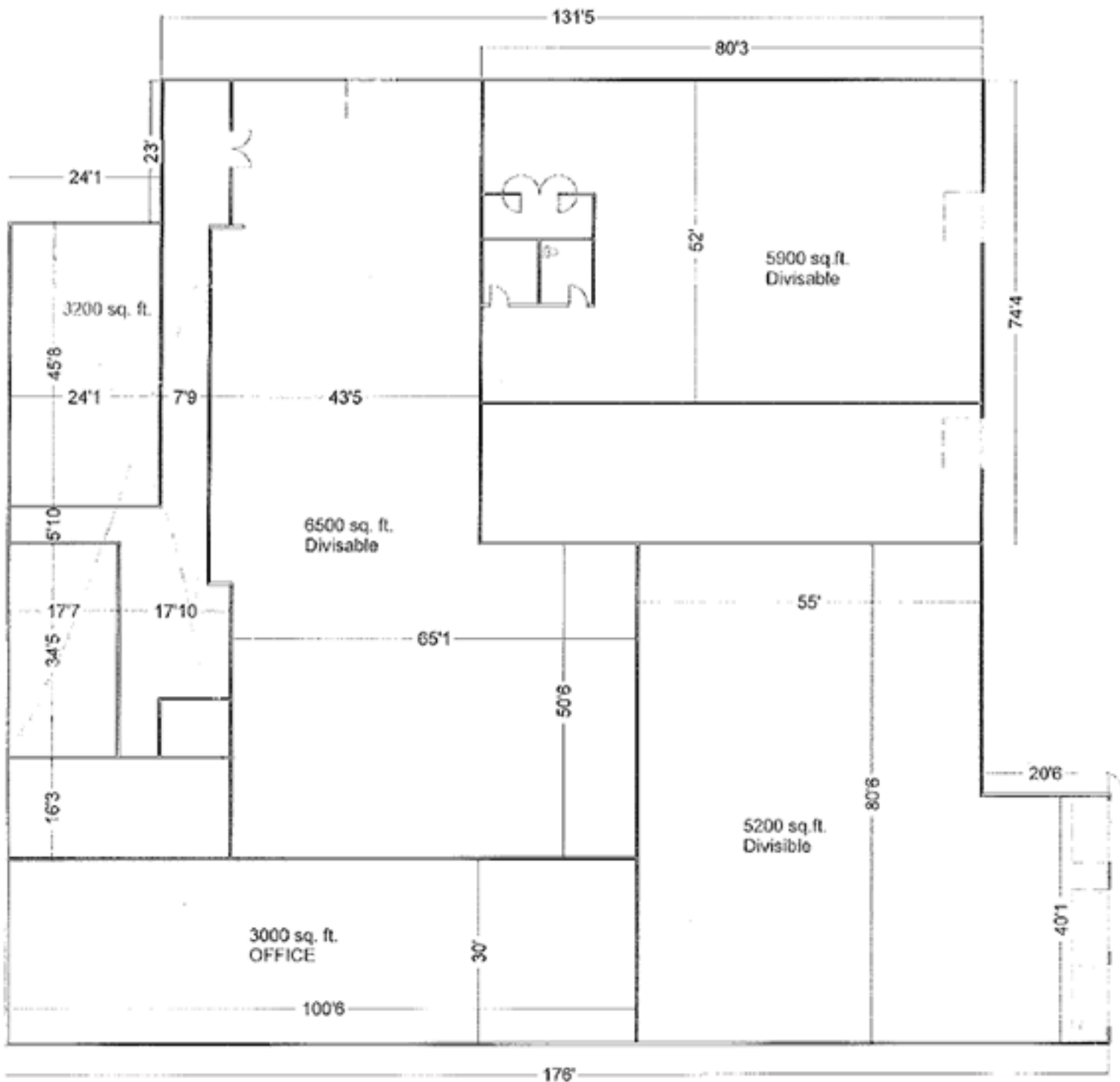
www.chicagolandcommercial.com



INDUSTRIAL SPACE FOR LEASE

250 CARPENTER BLVD, CARPENTERSVILLE, IL

FLOOR PLAN



FOR MORE INFORMATION:

CHRISTINA ADAMS

Direct: 847.246.9634

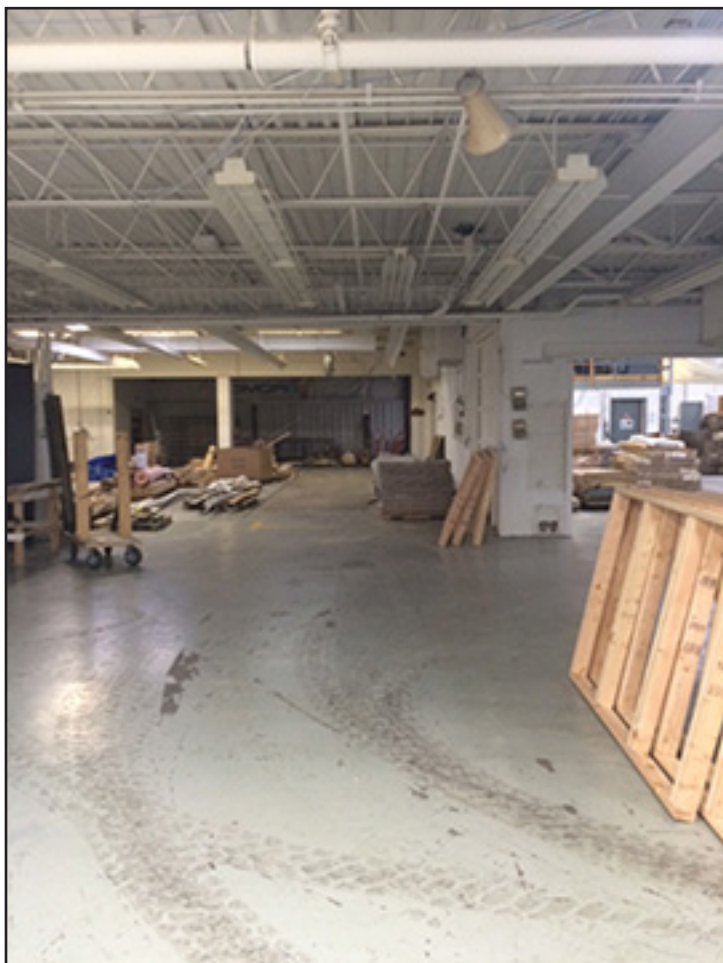
christina@chicagolandcommercial.com



INDUSTRIAL SPACE FOR LEASE

250 CARPENTER BLVD, CARPENTERSVILLE, IL

PHOTOS



FOR MORE INFORMATION:

CHRISTINA ADAMS

Direct: 847.246.9634

christina@chicagolandcommercial.com