



Currie Motors Frankfort Inc
9423 W Lincoln Hwy, Frankfort, Illinois, 604231388
Office: 708-479-1100

Customer Proposal

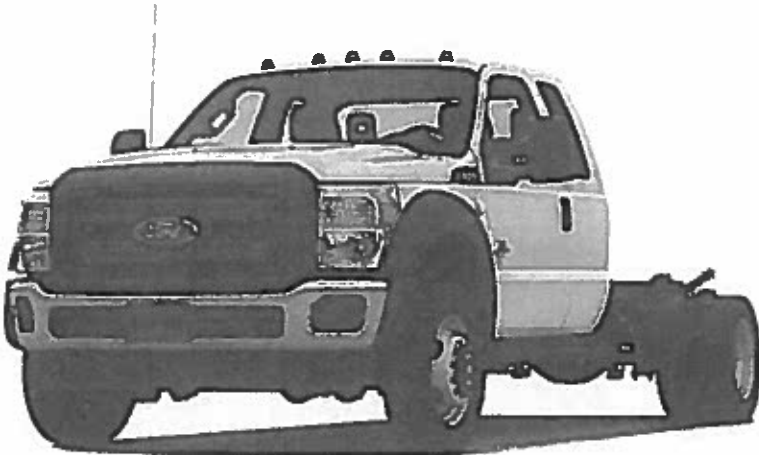
Prepared for:

Jack Clifton
Village Of Carpentersville

Prepared by:

THOMAS SULLIVAN
Office: 708-479-1100

Date: 08/30/2016
Vehicle: 2016 F-450 Chassis XL
4x4 SD Super Cab 186" WB DRW





Currie Motors Frankfort Inc
9423 W Lincoln Hwy, Frankfort, Illinois, 604231388
Office: 708-479-1100

2016 F-450 Chassis, SD Super Cab
4x4 SD Super Cab 186" WB DRW XL(X4H)

Selected Options

| Description | MSRP |
|--|---|
| Base Vehicle Price (X4H) | \$42,545.00 |
| Order Code 650A | N/C |
| Engine: 6.7L 4V OHV Power Stroke V8 Turbo Diesel B20 | \$8,130.00 |
| | <i>Includes intelligent oil-life monitor and turbo gauges. Includes - Dual 78 AH 750 CCA Batteries - 200 Amp Extra Heavy Duty Alternator</i> |
| Transmission: TorqShift 6-Speed Automatic | \$190.00 |
| | <i>Includes SelectShift</i> |
| Limited Slip w/4.10 Axle Ratio | \$360.00 |
| GVWR: 16,500 lb Payload Package | Included |
| Tires: 225/70Rx19.5G BSW AS | Included |
| Wheels: 19.5" Argent Painted Steel | Included |
| | <i>Hub covers/center ornaments not included.</i> |
| HD Vinyl 40/20/40 Split Bench Seat | Included |
| | <i>Includes driver side manual lumbar, center armrest, cupholder and storage</i> |
| Monotone Paint Application | STD |
| 186" Wheelbase | STD |
| Power Equipment Group | \$895.00 |
| | <i>Deletes passenger side lock cylinder. Includes upgraded door-trim panel Includes - Accessory Delay - Power Locks - Remote Keyless Entry - Perimeter Anti-Theft Alarm - Power Front Side Windows Includes 1-touch up and down power driver and passenger window. - MyKey Includes owner controls feature - Manual Telescoping 2-Way Fold Trailer Tow Mirrors Includes power/heated glass, heated convex spotter mirror and integrated clearance lamps/turn signals. - SecuriLock Passive Anti-Theft System (PATS)</i> |
| Snow Plow Prep Package | \$85.00 |
| | <i>Includes pre-selected springs (see Order Guide Supplemental Reference for springs/FGAWR of specific vehicle configurations) NOTE 1: Restrictions apply; see Supplemental Reference or Body-Builders Layout Book for details. NOTE 2: Also allows for the attachment of a winch.</i> |
| 4x4 Electronic-Shift-On-The-Fly (ESOF) | \$185.00 |
| | <i>Includes manual-locking hubs and auto rotary control on instrument panel</i> |
| Engine Block Heater | \$75.00 |
| 6-Ton Hydraulic Jack | \$55.00 |
| Transmission Power Take-Off Provision | \$280.00 |
| | <i>Includes transmission mounted live drive and stationary mode PTO.</i> |

Prices and content availability as shown are subject to change and should be treated as estimates only. Actual base vehicle, package and option pricing may vary from this estimate because of special local pricing, availability or pricing adjustments not reflected in the dealer's computer system. See salesperson for the most current information.

Prepared for: Jack Clifton, Village Of Carpentersville
By: THOMAS SULLIVAN Date: 08/30/2016 | Price Level: 650 Quote ID: Plainfield



Currie Motors Frankfort Inc
 9423 W Lincoln Hwy, Frankfort, Illinois, 604231388
 Office: 708-479-1100

2016 F-450 Chassis, SD Super Cab
 4x4 SD Super Cab 186" WB DRW XL(X4H)

Selected Options (cont'd)

| Description | MSRP |
|---|---|
| Trailer Brake Controller | \$270.00 |
| | <i>Verified to be compatible with electronic actuated drum brakes only.</i> |
| 6" Angular Black Molded-in-Color Running Boards | \$370.00 |
| Radio: AM/FM Stereo/Single CD/MP3 (Fleet) (LPO) | \$275.00 |
| | <i>Includes digital clock, 4 speakers and auxiliary audio input jack.</i> |
| SYNC w/MyFord Communications & Entertainment System | \$295.00 |
| | <i>Includes voice-activated with 911 Assist, Vehicle Health Report (VHR), traffic, directions and information services (Note: SYNC Services available for \$60 annual subscription fee), 1 USB port, compass and AppLink.</i> |
| Steering Wheel Audio Controls | \$70.00 |
| Exterior Backup Alarm (Pre Installed) | \$125.00 |
| | <i>Custom accessory.</i> |
| Daytime Running Lamps (DRL) (LPO) | \$45.00 |
| 50-State Emissions System | STD |
| Steel | N/C |
| Oxford White | N/C |
| Rust Proofing and Sound Shield | \$395.00 |
| Municipal Plates/Title | \$103.00 |
| 11' Steel Service Body | \$16,036.00 |
| | <i>KNAPHEIDE 6132D54J1 SERVICE BODY- CARPENTERSVILLE standard shelving consisting of 2 divider shelves for front verticals, one in rear vertical, one in curbside horizontal compartment, recessed tail lights, Knap-Lined rear bumper, rivetless next-generation latches with keyed lock cylinders, FACTORY PAINTED WHITE 2" trailer hitch receiver with 2" Combo hitch & insert 7-way trailer light plug, installed. Spray in bodiliner in cargo area, tailgate & compartment tops. 4 corner LED strobes Tommy Liftgate Model G2541342TP38. 49" X 38" + 4" Steel treadplate platform. 1300# Capacity. Recessed light kit. 3000 Watt Inverter in curbside front compartment.</i> |
| Shop Manual | \$325.00 |
| | <i>CD ROM Shop Manual</i> |
| SUBTOTAL | \$71,109.00 |
| Destination Charge | \$1,195.00 |
| TOTAL | \$72,304.00 |

Prices and content availability as shown are subject to change and should be treated as estimates only. Actual base vehicle, package and option pricing may vary from this estimate because of special local pricing, availability or pricing adjustments not reflected in the dealer's computer system. See salesperson for the most current information.



Currie Motors Frankfort Inc
9423 W Lincoln Hwy, Frankfort, Illinois, 604231388
Office: 708-479-1100

2016 F-450 Chassis, SD Super Cab
4x4 SD Super Cab 186" WB DRW XL(X4H)

Pricing - Single Vehicle

| | MSRP |
|-----------------------------|--------------------|
| <i>Vehicle Pricing</i> | |
| Vehicle Price | \$42,545.00 |
| Options & Colors | \$11,705.00 |
| Upfitting | \$16,859.00 |
| Destination Charge | \$1,195.00 |
| <i>Discount Adjustments</i> | |
| Discount | -\$11,982.00 |
| Total | \$60,322.00 |

Customer Signature

Acceptance Date

Prices and content availability as shown are subject to change and should be treated as estimates only. Actual base vehicle, package and option pricing may vary from this estimate because of special local pricing, availability or pricing adjustments not reflected in the dealer's computer system. See salesperson for the most current information.

Prepared for: Jack Clifton, Village Of Carpentersville
By: THOMAS SULLIVAN Date: 08/30/2016 | Price Level: 850 Quote ID: Plainfield



Purchase Order

Fiscal Year 2016

THIS NUMBER MUST APPEAR ON ALL INVOICES, PACKAGES AND SHIPPING PAPERS
 Purchase Order # **20160036-00**

BILL TO

PW
 VILLAGE OF CARPENTERSVILLE
 PUBLIC WORKS BUILDING
 1075 TAMARAC DRIVE
 CARPENTERSVILLE IL 60110

Delivery must be made within doors of specified destination.

VENDOR

CURRIE MOTORS
 9423 W LINCOLN HWY
 FRANKFORT IL 60423

SHIP TO

VILLAGE OF CARPENTERSVILLE
 PUBLIC WORKS BUILDING
 1075 TAMARAC DRIVE
 CARPENTERSVILLE IL 60110

| Vendor Phone Number | | Vendor Fax Number | | Requisition Number | | Delivery Reference | |
|---------------------|--|-------------------|----------------------|--------------------|---------------------|--------------------|--|
| 815-464-7500 | | | | 20160038 | | | |
| Date Ordered | Vendor Number | Date Required | Freight Method/Terms | | Department/Location | | |
| 09/08/2016 | 2323 | 09/12/2016 | | | SEWER UNDERGROUND | | |
| Item# | Description/Part No. | Qty | UOM | Unit Price | Extended Price | | |
| 1 | F-450 SERVICE TRUCK The Above Purchase Order Number Must Appear On All Correspondence - Packing Sheets And Bills Of Lading F-450 PICKUP WITH SERVICE BED | 1.0 | EACH | \$60,322.000 | \$60,322.00 | | |

PA Warrant 10/8/16

By 
 Village Manager

VENDOR COPY

PO Total **\$60,322.00**

CURRIE MOTORS FLEET

INVOICE

9423 W. Lincoln Highway
Frankfort, IL 60423

Phone 815-464-9200

Fax: 815-464-7500

curriefleet@gmail.com

SOLD TO:
VILLAGE OF CARPENTERSVILLE
1075 TAMARAC
CARPENTERSVILLE, IL 60111

INVOICE NUMBER | H0216
INVOICE DATE | 9/30/2016
PURCHASE ORDER NO | 20160036
SALESPERSON | Tom Sullivan

SHIPPED TO:

TERMS | 15 Days From Invoice
DELIVERY ETA |

| | | | | |
|--|----------------|-------------------|---|---------------------|
| H0216 | 2016 FORD F450 | 1FD0X4HT9GEC53280 | \$ | 60,322.00 |
| <p>FINANCE CHARGES will apply if the invoice is unpaid from <u>15 days</u> after delivery date of the vehicle. The "FINANCE CHARGES" are computed by a periodic rate of <u>1%</u> per month. The title application must be filed with Secretary of State within <u>30 days</u> or will be subject to a delinquent fee of <u>\$188.00</u></p> | | | SUBTOTAL | \$ 60,322.00 |
| <p>DIRECT ALL INQUIRIES TO:</p> <p>Keri VanDerMuil 815-464-9200 Keri@curriemotors.com</p> | | | <p>MAKE ALL CHECKS PAYABLE TO:</p> <p>Currie Motors Attn Accounts Receivable 9423 W. Lincoln Highway Frankfort, IL 60423</p> | |
| | | | PAY THIS AMOUNT | \$ 60,322.00 |

THANK YOU FOR YOUR BUSINESS!